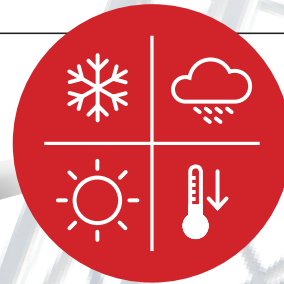


IP-SERIES

WITHSTAND THE ELEMENTS

Introducing the SENKO IP-SERIES, an effective and low cost connector for harsh environmental applications



IP-LC



IP-MPO



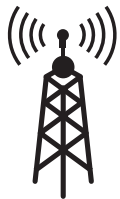
IP-LCXP

FIELD INSTALLABLE



IP-SC

FIELD INSTALLABLE



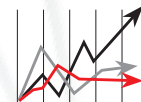
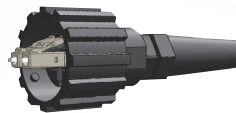
New line of IP 68 Connectors exceed ODVA requirements

The SENKO IP-LC Connector is designed to exceed the requirements of ODVA, the connectors meet IP 68 environmental sealing ratings and are the ideal choice for a low cost/easy to use solution in Industrial, Fiber to the Antenna (FTTa), or any other harsh environmental applications.



Simple bayonet locking system

The IP-LC Connector is designed according to the IEC 61076-3-106 interface standard, which allows mating to other similar mechanical locking systems.



Low Insertion Loss

Incorporating the SENKO LC connector yields exceptionally low insertion loss for Singlemode applications and provides connector color coding options in Multimode applications for differentiation of OM3 or OM4 constructions.

FEATURES

- Cost effective solution for in house termination
- IP68 Water immersion and Dust protection for hash environment
- Wide range of operational temperature for outside plant -40°C/+70 per
- Wide range of cables to be used, 5-8mm OD cable with two 2.0mm to 3.0mm jacketed subunits
- Chemical Resistance
- Intermatable to other Industrial LC adaptor per IEC 61076-3-106
- Simple assembly requiring no special tools
- Durable mechanical mating, minimum of 500 matings

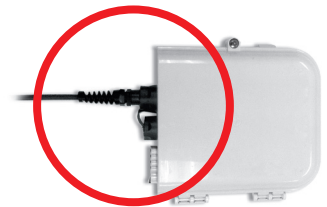
OPTICAL CHARACTERISTICS	SINGLEMODE	MULTIMODE
For IP-LC Connector	Typical	Typical
Insertion Loss	0.10dB	0.20dB
Return Loss	≥ 55dB typical for (PC)	
Durability	< 0.2dB typical change 500 matings	
Operating Temperature	-40°C to +70°C	
Ferrule Hole Size	125.5µm +1/-0 Concentricity: ≤ 1µm	127µm
IP Rating	IP 68	

IP-LC Connector

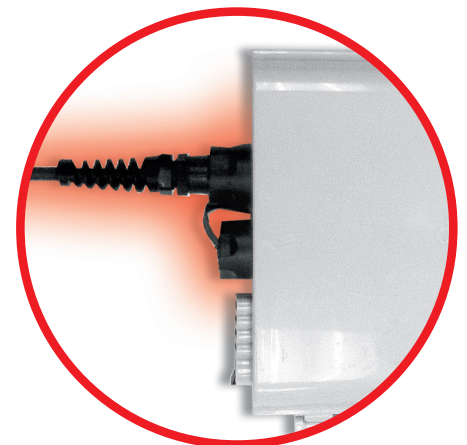


FEATURES

- Cost effective solution for in house termination
- IP68 Water immersion and Dust protection for harsh environment
- Wide range of operational temperature for outside plant -40°C/+70
- Wide range of cables to be used, 5-8mm OD cable with two 2.0mm to 3.0mm jacketed subunits
- Chemical Resistance
- Intermatable to other Industrial LC adaptor per IEC 61076-3-106
- Simple assembly requiring no special tools
- Durable mechanical mating, minimum of 500 matings



OPTICAL CHARACTERISTICS	SINGLEMODE	MULTIMODE
FOR IP-LC CONNECTOR	TYPICAL	TYPICAL
Insertion Loss	0.10dB	0.20dB
Return Loss	≥ 55dB typical for (PC)	
Durability	< 0.2dB typical change 500 matings	
Operating Temperature	-40°C to +70°C	
Ferrule Hole Size	125.5µm +1/-0 Concentricity: ≤ 1µm	127µm
IP Rating	IP 68	



CONNECTOR CODE	BOOT	
IP-LC	CSM	SM 125.5 µm
	CMM	MM 127 µm

IP - LC - CMM ORDER CODE example

SENKO ADVANCED COMPONENTS, INC.

Americas

USA EAST 1-888-32-SENKO
USA WEST 1-858-623-3300
TEXAS 1-972-661-9080
Sales-Americas@senko.com

Asia

HONG KONG +852-2121-0516
SHANGHAI +86-21-5830-4513
SHENZHEN +86-755-2533-4893
Sales-Asia@senko.com

Europe

UK +44 (0) 118 982 1600
ITALY +39 011 839 98 28
POLAND +48 71 776 0737
Sales-Europe@senko.com

Asia Pacific

AUSTRALIA +61 (0) 3 9755-7922
Sales-Asia-Pacific@senko.com
Middle East North Africa
DUBAI +971 4 8865160
Sales-MENA@senko.com

Japan

TOKIO +81 (0) 3 5825-0911
Sales-Japan@senko.com

CALL 1-888-32-SENKO